

FEATURED ON TV!

1709 Camino Real Way
Roseville, CA 95747

3 Bedrooms | 4 Bathrooms
2474 SQ. FT. | Built 2015

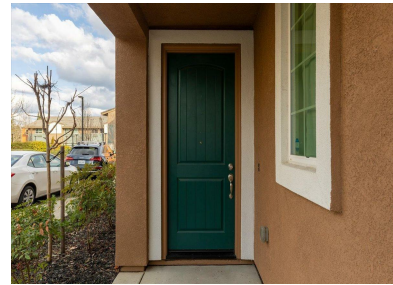
\$589,000



This property is featured on TV!
For more information:

Text ONTV7343 to (844) 760-1200

Message & data rates may apply. You may be contacted by the agent and lender associated with this property to follow up.



Property Description

Rare Gem in Paseo Del Norte Community: Full-Size Backyard & Corner Lot. Spanning 2,474 square feet over 3 stories, this dynamic residence is thoughtfully designed for both comfort and entertaining. The main floor features the Kitchen, Dining Room, Living Room, half bath, and a finished 2-car garage. Upstairs, discover the Primary bedroom alongside two additional bedrooms, two full size bathrooms, loft and spacious laundry room. The loft area provides an ideal spot for a home office or playroom for the kids. But what truly sets this home apart is the entire third-story bonus room with half bath, offering endless possibilities as a fourth bedroom or entertainment space for all to enjoy. Ideally located in West Roseville, this property offers easy access to shopping ...



Sarah Perkins

Real Estate Agent
DRE #02215239
Nu Home Pros
📞 m. (707) 483-0690 o. (707) 483-0690
✉ sarahperkins.realtor@gmail.com



Ron Siegel

Branch Manager/LO/Radio Host
NMLS #217037
Siegel Lending Team at Geneva Financial
📞 m. (949) 629-4203 o. (800) 306-1990
✉ Ron@RonSiegelRadio.com



1709 Camino Real Way

Roseville, CA 95747



ESSENTIAL PLACES NEARBY

MOST WITHIN

4 MILES



Sutter Walk-In Care Roseville - ...

Medical Clinic - Distance: 2.31 miles



Rose Café & Bagel

Coffee Shop - Distance: 0.98 miles



Safeway

Super Market - Distance: 1.09 miles



Naake Suspension Specialist

Auto Parts Store - Distance: 1.80 miles



West Roseville Veterinary Hospital

Veterinarian - Distance: 2.58 miles



MinuteClinic at CVS

Pharmacy - Distance: 0.34 miles



24 Hour Fitness - Roseville

Fitness Center - Distance: 2.33 miles



Wells Fargo Bank

Bank - Distance: 1.15 miles



AM PM Arco

Gas Station - Distance: 1.87 miles



Walmart Supercenter

Department Store - Distance: 3.62 miles



RESTAURANTS NEARBY



Timbers At the Lodge

American - Distance: 0.83 miles



kitchen747

Pizza - Distance: 1.02 miles



CJF Chinese Fine Cuisine

Chinese - Distance: 1.08 miles



Moon Tea House

Asian Fusion - Distance: 1.92 miles



Bombay Cuisine & Indian Sweets

Indian - Distance: 2.07 miles



Rose Café & Bagel

Bagels - Distance: 0.99 miles



MoJoe's

Ice Cream & Frozen Yogurt - Distance: 1.03 miles



The Great Greek Mediterranean Grill ...

Greek - Distance: 1.89 miles



Sushi Mon By Sky

Sushi Bars - Distance: 2.04 miles



Khobkoon Thai Cuisine

Thai - Distance: 2.07 miles



OUTDOOR ACTIVITIES NEARBY



PARK

Bill Santucci Park
Distance: 0.56 miles



GOLF

Timber Creek Golf Course
Distance: 0.84 miles



RECREATIONAL WATER

Gibson Lake
Distance: 3.96 miles



DOG PARK

Bear Dog Park
Distance: 0.78 miles



TENNIS

Steve Dunmore Tennis
Distance: 3.38 miles



BIKE / PEDESTRIAN TRAIL

Gibson Ranch Regional Park
Distance: 4.20 miles



SCHOOLS NEARBY

KG - 05

QUAIL GLEN ELEMENTARY SCHOOL

Student To Teacher Ratio: 22.10



1.03 Miles

06 - 08

SILVERADO MIDDLE SCHOOL

Student To Teacher Ratio: 22.20



1.44 Miles

09 - 12

WOODCREEK HIGH SCHOOL

Student To Teacher Ratio: 21.90



1.04 Miles

There are 0 private & within 8 miles of this property. The displayed schools are the assigned public schools.