

# FEATURED ON TV!

1001 S Beckett Court  
Anaheim Hills, CA 92808

5 Bedrooms | 5 Bathrooms  
3164 SQ. FT. | Built 1992

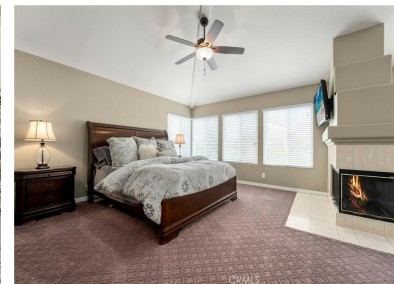
**\$1,750,000**



This property is featured on TV!  
For more information:

**Text ONTV9206 to (844) 760-1200**

Message & data rates may apply. You may be contacted by the agent and lender associated with this property to follow up.



## Property Description

Welcome to 1001 E Beckett Court, a stunning executive pool home nestled in the prestigious Anaheim Hills. This luxurious 5-bedroom, 4.5-bathroom residence exudes sophistication and comfort at every turn. Pass through the gated front courtyard, setting the stage for grandeur, and enter through the impressive double doors. The foyer beckons you into the formal living room and dining room, where beveled glass French doors open onto the backyard oasis, complete with a sparkling salt water pool and spa. The heart of the home is the expansive kitchen, boasting a center island with a 5-burner cooktop, newly upgraded cabinets, and top-of-the-line Kitchen Aid stainless steel appliances. Granite counters with a beautiful backsplash complement the space, while an expansive b ...



### Travis Fairweather

Realtor®  
DRE #01885035  
First Team Real Estate  
📞 m. (949) 795-0114  
✉️ tfairweather1@gmail.com



### Ron Siegel

Branch Manager/LO/Radio Host  
NMLS #217037  
Siegel Lending Team at Geneva Financial  
📞 m. (949) 629-4203 o. (800) 306-1990  
✉️ Ron@RonSiegelRadio.com



Geneva Financial, LLC, NMLS #42056 • All loans subject to qualifying factors. Not all applicants will qualify. Equal Opportunity Lender and Equal Housing Lender. 180 S. Arizona Ave., Ste. 310 Chandler, AZ 85225. 1-888-889-0009. AZ BK #0910215. DRE #01885035. All information provided is deemed reliable, but is not guaranteed. Copyright 2024 MoveTube®.



# 1001 S Beckett Court

Anaheim Hills, CA 92808



## ESSENTIAL PLACES NEARBY

MOST WITHIN

2 MILES



### Clarke Lew, MD

Medical Clinic - Distance: 0.55 miles



### Mobil

Gas Station - Distance: 0.60 miles



### CVS Pharmacy

Pharmacy - Distance: 0.62 miles



### Move Fitness

Fitness Center - Distance: 0.88 miles



### Bank of America Financial Center

Bank - Distance: 1.08 miles



### Anaheim Canyon Animal Hospital

Veterinarian - Distance: 0.56 miles



### Starbucks

Coffee Shop - Distance: 0.62 miles



### Ralphs

Super Market - Distance: 0.62 miles



### Nordstrom Rack

Department Store - Distance: 1.07 miles



### Advance Auto Parts

Auto Parts Store - Distance: 1.18 miles



## RESTAURANTS NEARBY



### Tempo Cantina

Mexican - Distance: 0.55 miles



### Latte Da Ristorante

American - Distance: 0.55 miles



### Señor Baja

Seafood - Distance: 0.65 miles



### Domo Sushi

Sushi Bars - Distance: 1.11 miles



### LilyPopp Cafe

Bagels - Distance: 1.15 miles



### Siam Savory Thai Cuisine

Thai - Distance: 0.55 miles



### Rosine's Mediterranean Cafe

Mediterranean - Distance: 0.61 miles



### Bodhi Leaf Coffee Traders

Coffee Roasteries - Distance: 1.02 miles



### Porky's Pizza

Pizza - Distance: 1.11 miles



### The Habit Burger Grill

Burgers - Distance: 1.21 miles



## OUTDOOR ACTIVITIES NEARBY



### PARK

Sycamore Park  
Distance: 0.80 miles



### RECREATIONAL WATER

Walnut Canyon Reservoir  
Distance: 1.05 miles



### DOG PARK

Yorba Linda Checkers Dog Park  
Distance: 2.12 miles



### BIKE / PEDESTRIAN TRAIL

Deer Canyon Park Preserve  
Distance: 0.88 miles



### GOLF

Anaheim Hills Golf Courses  
Distance: 1.80 miles



### TENNIS

Las Palomas Tennis Park  
Distance: 2.94 miles



## SCHOOLS NEARBY

KG - 06

### CANYON RIM ELEMENTARY SCHOOL

Student To Teacher Ratio: 26.30



0.59 Miles

KG - 06

### CANYON RIM ELEMENTARY SCHOOL

Student To Teacher Ratio: 26.30



0.59 Miles

09 - 12

### CANYON HIGH SCHOOL

Student To Teacher Ratio: 26.30



2.93 Miles

There are 0 private & within 8 miles of this property. The displayed schools are the assigned public schools.