

OPEN HOUSE

Sat 3/16 - Sun 3/17 | 1:00 PM - 4:00 PM

1001 S Beckett Court
Anaheim Hills, CA 92808

5 Bedrooms | 5 Bathrooms
3164 SQ. FT. | Built 1992

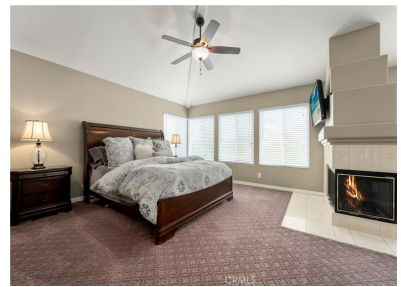
\$1,750,000



Register & receive details to your phone
Text **OPEN9206** to **(844) 760-1200**

Scan code and tap send

Message & data rates may apply. You may be contacted by the agent and lender associated with this property to follow up.



Property Description

Welcome to 1001 E Beckett Court, a stunning executive pool home nestled in the prestigious Anaheim Hills. This luxurious 5-bedroom, 4.5-bathroom residence exudes sophistication and comfort at every turn. Pass through the gated front courtyard, setting the stage for grandeur, and enter through the impressive double doors. The foyer beckons you into the formal living room and dining room, where beveled glass French doors open onto the backyard oasis, complete with a sparkling salt water pool and spa. The heart of the home is the expansive kitchen, boasting a center island with a 5-burner cooktop, newly upgraded cabinets, and top-of-the-line Kitchen Aid stainless steel appliances. Granite counters with a beautiful backsplash complement the space, while an expansive b ...



Travis Fairweather

Realtor®
DRE #01885035
First Team Real Estate
📞 m. (949) 795-0114
✉️ tfairweather1@gmail.com



Ron Siegel

Branch Manager/LO/Radio Host
NMLS #217037
Siegel Lending Team at Geneva Financial
📞 m. (949) 629-4203 o. (800) 306-1990
✉️ Ron@RonSiegelRadio.com



Geneva Financial, LLC, NMLS #42056 • All loans subject to qualifying factors. Not all applicants will qualify. Equal Opportunity Lender and Equal Housing Lender. 180 S. Arizona Ave., Ste. 310 Chandler, AZ 85225. 1-888-889-0009. AZ BK #0910215. DRE #01885035. All information provided is deemed reliable, but is not guaranteed. Copyright 2024 MoveTube®.



1001 S Beckett Court

Anaheim Hills, CA 92808



ESSENTIAL PLACES NEARBY

MOST WITHIN

2 MILES



Clarke Lew, MD

Medical Clinic - Distance: 0.55 miles



Mobil

Gas Station - Distance: 0.60 miles



CVS Pharmacy

Pharmacy - Distance: 0.62 miles



Move Fitness

Fitness Center - Distance: 0.88 miles



Bank of America Financial Center

Bank - Distance: 1.08 miles



Anaheim Canyon Animal Hospital

Veterinarian - Distance: 0.56 miles



Starbucks

Coffee Shop - Distance: 0.62 miles



Ralphs

Super Market - Distance: 0.62 miles



Nordstrom Rack

Department Store - Distance: 1.07 miles



Advance Auto Parts

Auto Parts Store - Distance: 1.18 miles



RESTAURANTS NEARBY



Tempo Cantina

Mexican - Distance: 0.55 miles



Latte Da Ristorante

American - Distance: 0.55 miles



Señor Baja

Seafood - Distance: 0.65 miles



Domo Sushi

Sushi Bars - Distance: 1.11 miles



LilyPopp Cafe

Bagels - Distance: 1.15 miles



Siam Savory Thai Cuisine

Thai - Distance: 0.55 miles



Rosine's Mediterranean Cafe

Mediterranean - Distance: 0.61 miles



Bodhi Leaf Coffee Traders

Coffee Roasteries - Distance: 1.02 miles



Porky's Pizza

Pizza - Distance: 1.11 miles



The Habit Burger Grill

Burgers - Distance: 1.21 miles



OUTDOOR ACTIVITIES NEARBY



PARK

Sycamore Park
Distance: 0.80 miles



RECREATIONAL WATER

Walnut Canyon Reservoir
Distance: 1.05 miles



DOG PARK

Yorba Linda Checkers Dog Park
Distance: 2.12 miles



BIKE / PEDESTRIAN TRAIL

Deer Canyon Park Preserve
Distance: 0.88 miles



GOLF

Anaheim Hills Golf Courses
Distance: 1.80 miles



TENNIS

Las Palomas Tennis Park
Distance: 2.94 miles



SCHOOLS NEARBY

KG - 06

CANYON RIM ELEMENTARY SCHOOL

Student To Teacher Ratio: 26.30



0.59 Miles

KG - 06

CANYON RIM ELEMENTARY SCHOOL

Student To Teacher Ratio: 26.30



0.59 Miles

09 - 12

CANYON HIGH SCHOOL

Student To Teacher Ratio: 26.30



2.93 Miles

There are 0 private & within 8 miles of this property. The displayed schools are the assigned public schools.