



PROPERTY REPORT

2524 Bonnie Lane, Lewisville, TX 75056

 2 Bedrooms

 3 Bathrooms

 2,139 Square feet



NATALIE HENDERSON

NH Real Estate Company
LIC# 0565469

m: (817) 779-0610 **o:** (817) 779-0610
e: natalie@nhrealestate.com



TRISTAN SHERRILL

Branch Manager
NMLS# 299820

m: (469) 609-1188
e: homeloans@yourloanpro.com
w: www.YourLoanPro.com



3100 W Ray RD, STE 201 Office # 209, Chandler, AZ 85226
Branch NMLS# 1660690

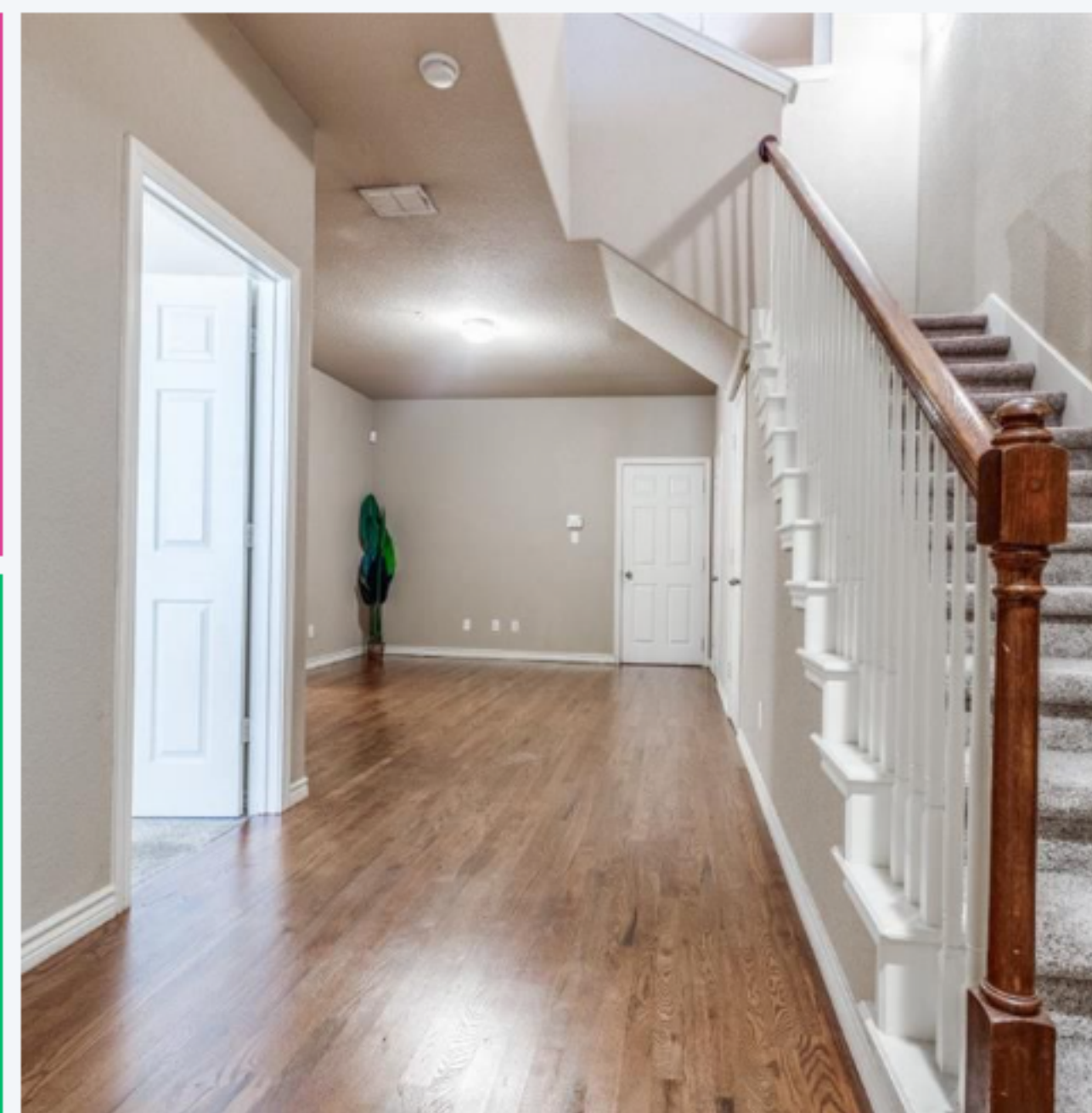


2

BED

3

BATH



2139

SQ FT

2007

BUILT IN





SUMMARY

Low-maintenance townhome with beautiful amenities. 3 stories of class and elegance with two possible office areas. With a balcony off the 2nd level living area, this home is the epitome of exclusivity. The HOA maintains the yard and the balcony overlooks this gorgeous well-kept area. 3 floors of upscale living with a secondary bedroom on the bottom floor and the primary on the 3rd floor. Soaring vaulted ceilings and open living areas make this townhome a must-see. Upstairs you will find a bonus area perfect for an office. Stainless steel appliances and granite countertops give this townhome a contemporary look.



VERY CONVENIENT AREA

Most major services in this area are located within **2** miles.



THE GREAT OUTDOORS

This home is located near a variety of outdoor activities.



NEIGHBORHOOD EATS

This home is located near **57** moderately priced restaurants rated four stars and up.



GREAT SCHOOLS

The schools for this home are **average** for this neighborhood



2524 BONNIE LANE, LEWISVILLE, TX 75056

AREA REPORT



CONVENIENT

This home is in a **convenient** area. Some daily errands in this location **require a car** and most major services are within **2** miles.



GAS



COFFEE



ATM



CLEANERS



MEDICAL



0.8
MILES

1.2
MILES

1.3
MILES

1.4
MILES

1.4
MILES



MOVIE THEATER



GROCERIES



PHARMACY



GYM

4.9
MILES

2.2
MILES

1.7
MILES

1.5
MILES



ListReports

DISCLAIMER: The information in this report is from third-party sources and its accuracy cannot be guaranteed.



2524 BONNIE LANE, LEWISVILLE, TX 75056

SCHOOL REPORT



SCHOOLS IN YOUR AREA

The assigned schools are **average** for the area. There are also **8** private schools within **5** miles.

PK-5

ETHRIDGE ELEMENTARY
SCHOOL
ASSIGNED

7

RATING

6-9

LAKEVIEW MIDDLE
SCHOOL
ASSIGNED

4

RATING

9-12

THE COLONY HIGH
SCHOOL
ASSIGNED

6

RATING



ListReports

DISCLAIMER: School data is provided by Great Schools, ATTOM Data Solutions and agent selection. It is intended for reference only. Contact the school or district directly to verify enrollment eligibility.



2524 BONNIE LANE, LEWISVILLE, TX 75056





OUTDOOR REPORT



THE GREAT OUTDOORS

This home is located near a variety of outdoor activities.

POPULAR

	PARK SK8 ZONE SKATE PARK	1.5 MILES
	GOLF COURSE GOLF CLUB CASTLE HILLS	1.7 MILES
	DOG PARK LEWISVILLE DOG PARK	4.2 MILES
	HIKING NOB HILL GREENBELT	5.2 MILES





2524 BONNIE LANE, LEWISVILLE, TX 75056

FOOD REPORT



NEIGHBORHOOD EATS

This home is located near **57** moderately priced restaurants and has an **average** variety of cuisines.

69



WITHIN 5 MILES

\$

42

\$\$

15

\$\$\$

2

\$\$\$\$

1

GOOD EATS BY CATEGORY

FAST FOOD	19
AMERICAN	10
PIZZA	8
BARS	4
JAPANESE	4
CAFES, COFFEE AND TEA	4
SEAFOOD	3
ITALIAN	3
MEXICAN	3
OTHER	8

To learn more about this home or obtain financing information,
please contact:



NATALIE HENDERSON

NH Real Estate Company

LIC# 0565469

m: (817) 779-0610 | o: (817) 779-0610

e: natalie@nhrealestate.com



TRISTAN SHERRILL

Branch Manager

NMLS# 299820

m: (469) 609-1188

e: homeloans@yourloanpro.com

w: www.YourLoanPro.com



3100 W Ray RD, STE 201 Office # 209, Chandler,
AZ 85226

Branch NMLS# 1660690