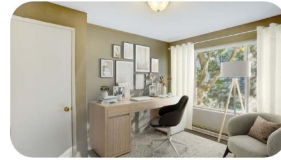




**Rhonda Porter**  
Mortgage Consultant



# 1214 Taylor Ave N Apt 101

Seattle, WA 98109

**\$535,000**

MLS ID: 2193385

2 Bedrooms

2 Bathrooms

4 Stories

1,141 sq ft

Rare 3 bedroom 1-1/2 bath Queen Anne condo close to Shopping, Seattle Center, and South Lake Union. Easy access to bus lines. Corner unit with views of downtown from deck. Includes 2 assigned off-street car parking spaces and two storage units! Large open floor plan with lots of light. Living room wood fireplace and built-in bookcases. Newer flooring and recently updated kitchen and bathroom. Storage units on basement level. No...

## Open House

April 13th, 2024

From 10:00 AM to 3:00 PM

## Jim Reppond

Coldwell Banker Danforth

Washington

### Listing Agent

### Loan Originator

### Scan For More Information



**Jim Reppond**

Coldwell Banker Danforth

Washington

(206) 295-1771



**Rhonda Porter**

New American Funding

NMLS #121324

(206) 718-9488

